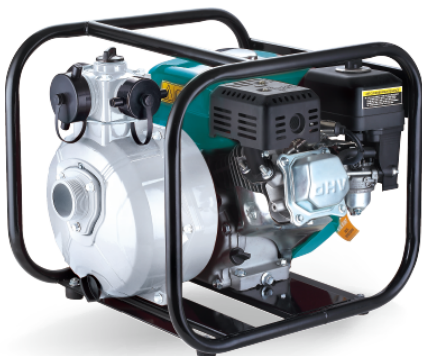


LEO



LEO PERMANENT MAGNET INTELLIGENT BOOSTER



MAC 550

- Perfect Water Pressure
- Intelligent Variable Speed
- Permanent Magnet Motor
- User Friendly
- Protective Function
- Energy and Space Saving
- Low Noise

Applications

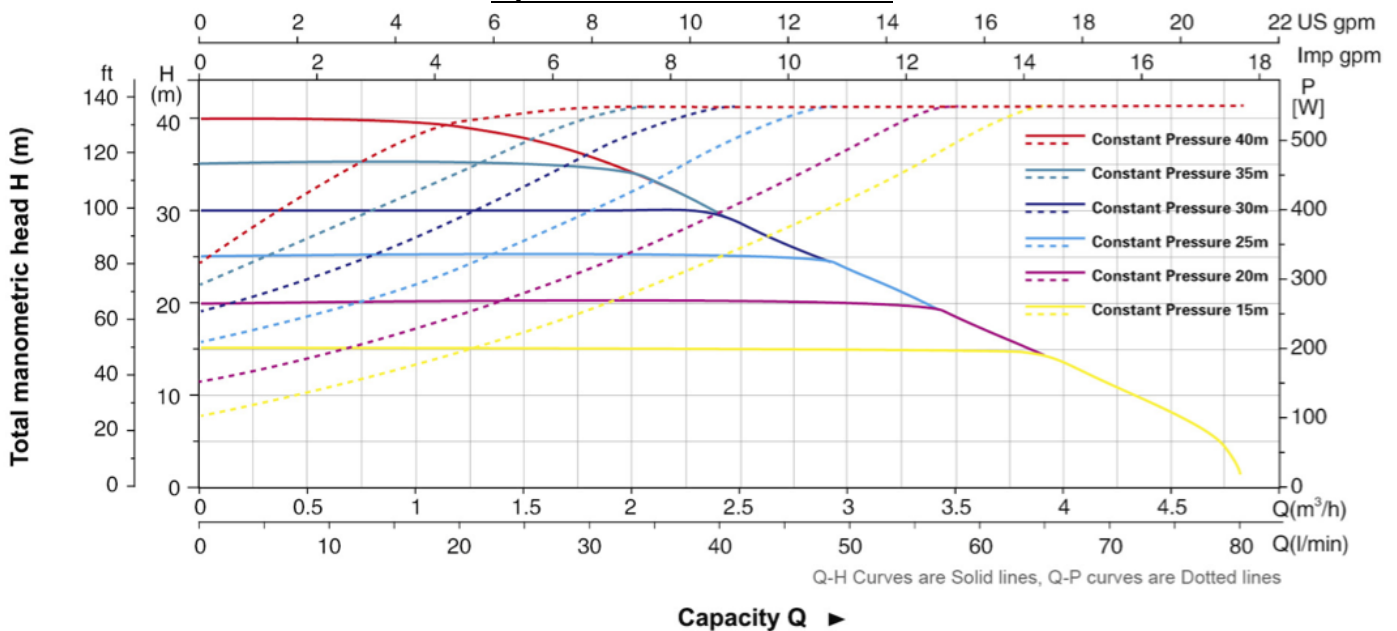
Water supply and pressure boosting for all domestic application. Garden watering, building water supply and agriculture.

Features

- Ambient Max. temperature +50°C
- Liquid Max. temperature +40°C
- Liquid PH value: 6.5 – 8.5
- System Max. pressure: 10 bar
- Ingress protection: F
- Noise level: 47dB(A)
- Protection class: IPX4
(suitable for outdoor installation)
- Dimensions: 392 x 160 x 315 mm
- Weight: 11 kg

MODEL	MAC 550
Voltage / Frequency	220V, 50/60Hz
Max. Power	550 W
Max. Flow	80 L/min
Max. Head	40 m
Max. Speed	5,200 rpm
Max. Current	2.7 A
Max. Suction	6 m
Connection Size	G 1"
PRICE	RM 1,985.00

Hydraulic Performance Curves



LEO STAINLESS STEEL HORIZONTAL MULTISTAGE PUMPS



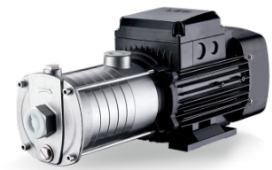
ECHM



ECHM-D-E
(with P.C.)



ECHM-E



ECHM-S

Applications

- Household water supply
- Pipeline pressurization
- Industrial and mining
- Fish farming and poultry raising
- Central air conditioning and heating circulation

Features

- Copper winding
- AISI 304 fabricated shaft
- Built in thermal protector
- Insulation class: F
- Protection class: IP44

MODEL	OLD MODEL		FLOW (L/min)	HEAD (m)	MAX. SUCT (m)	POWER (kw / hp)	INLET / OUTLET	PRICE (RM)
ECHM 2-20D-E	-	220V	10 – 60	16 – 8	8	0.37 / 0.5	1" x 1"	665.00
ECHM 2-30D-E	-	220V	10 – 60	24 – 12	8	0.37 / 0.5	1" X 1"	695.00
ECHM 2-30	LCHM 2-30	220V						705.00
ECH 2-30	LCH 2-30	415V						
ECHM 2-30E	-	220V						875.00
ECHM 2-30S	-							1,175.00
ECHM 2-40D-E	-	220V	10 – 60	33 – 16	8	0.55 / 0.75	1" X 1"	765.00
ECHM 2-40	LCHM 2-40							875.00
ECHM 2-40E	-							1,045.00
ECHM 2-40S	-							1,335.00
BP-ECH 2-40	-							415V
ECHM 2-50	LCHM 2-50	220V	10 – 60	40 – 19	8	0.55 / 0.75	1" X 1"	925.00
ECHM 2-50E	-							1,095.00
ECHM 2-50S	-							1,385.00
ECHM 4-20D-E	-	220V	17 – 117	17 – 8	8	0.55 / 0.75	1¼" X 1"	705.00
ECHM 4-30D-E	-	220V	17 – 117	27 – 13	8	0.55 / 0.75	1¼" X 1"	745.00
ECHM 4-30	LCHM 4-30							765.00
ECHM 4-30E	-							935.00
ECHM 4-30S	-							1,225.00
ECHM 4-40D-E	-	220V	17 – 117	36 – 17	8	0.75 / 1.0	1¼" X 1"	795.00
ECHM 4-40	LCHM 4-40	220V						925.00
ECH 4-40	LCH 4-40	415V						
ECHM 4-40E	-	220V						1,095.00
ECHM 4-40S	-							1,395.00
BP-ECH 4-40	-	220V						3,155.00
		415V						

LEO STAINLESS STEEL HORIZONTAL MULTISTAGE PUMPS



BP-ECH

Applications

- Pressure boosting for water supply, domestic and light commercial applications

Features

- Constant pressure with integrated speed control
- Dry running protection with auto-restart
- Easy installation and operation
- Quiet operation
- Stainless steel construction for long life
- Built in non-return valve

MODEL	OLD MODEL		FLOW (L/min)	HEAD (m)	MAX. SUCT (m)	POWER (kw / hp)	INLET / OUTLET	PRICE (RM)
ECHM 4-50 ECH 4-50	LCHM 4-50 -	220V 415V	17 – 117	46 – 21	8	1.1 / 1.5	1¼" X 1"	1,015.00
ECHM 4-50E	-	220V						1,185.00
ECHM 4-50S	-							1,475.00
BP-ECH 4-50	-	220V						2,725.00
ECHM 4-60 ECH 4-60	LCHM 4-60 LCH 4-60	220V 415V	17 – 117	55 – 26	8	1.1 / 1.5	1¼" X 1"	1,065.00
BP-ECH 4-60	-	220V						2,775.00
BP-ECH 10-10	-	220V	100 – 183	9.1 – 5.8	8	0.75 / 1.0	1½" X 1¼"	2,765.00
BP-ECH 10-20	-		100 – 200	17.9 – 10.6		0.75 / 1.0		2,775.00
ECHM 10-30 ECH 10-30	- -	220V 415V	100 – 200	27.1 – 16.9	8	1.1 / 1.5	1½" X 1¼"	1,275.00
BP-ECH 10-30	-	220V						3,065.00
ECHM 10-40 ECH 10-40	- -	220V 415V	100 – 200	38.6 – 24.6	8	1.5 / 2.0	1½" X 1¼"	1,595.00
BP-ECH 10-40	-	415V						4,035.00
ECH 10-50	-	415V	100 – 200	47.8 – 31.1	8	2.2 / 3.0	1½" X 1¼"	1,725.00
BP-ECH 10-50	-							4,265.00
BP-ECH 15-10	-	415V	150 – 350	12.4 – 8.2	8	1.1 / 1.5	2" X 2"	3,565.00
BP-ECH 15-20	-			25.6 – 18.8		2.2 / 3.0		3,985.00
*BP-ECH 15-30	-			38.7 – 28.5		3.0 / 4.0		5,985.00
BP-ECH 20-10	-	415V	200 – 467	12.1 – 5.7	8	1.1 / 1.5	2" X 2"	3,565.00
BP-ECH 20-20	-			26.1 – 17.2		2.2 / 3.0		3,985.00
BP-ECH 20-30	-			39.9 – 26.9		3.0 / 4.0		5,875.00

LEO VERTICAL MULTISTAGE CENTRIFUGAL PUMPS



LVR



LVS

Applications

- Water supply & drainage for high rise buildings, filtration and transfer at waterworks, pressure boosting in main pipe
- Washing & cleaning systems, boiler feeding, cooling water circulation, water treatment systems and auxiliary system
- Ultra-filtration systems, reverse osmosis systems, distillation systems, separators, swimming pools
- Sprinkler irrigation, drip-feed irrigation
- Food & beverage industry
- Fire fighting system

Features

- Totally enclosed & fan-cooled motor
- Liquid temperature: -20°C – 120°C
- Protection class: IP55
- Max pressure: 33bar

MODEL		FLOW (L/min)	HEAD (m)	POWER (kw / hp)	INLET / OUTLET	Price (RM)	
						LVR	LVS
1-12	415V	11.7 – 40	73 – 50	0.75 / 1.0	32mm	C/S*	2,915.00
1-27	415V	11.7 – 40	165 – 114	1.5 / 2.0	32mm	C/S*	3,975.00
1-36	415V	11.7 – 40	221 – 154	2.2 / 3.0	32mm	3,505.00	4,495.00
5-5	415V	41 – 141	33 – 18	0.75 / 1.0	32mm	C/S*	2,615.00
5-6	415V	41 – 141	40 – 23	1.1 / 1.5	32mm	1,935.00	2,745.00
5-7	415V	41 – 141	46 – 27	1.1 / 1.5	32mm	C/S*	2,795.00
5-8	415V	41 – 141	53 – 31	1.1 / 1.5	32mm	C/S*	2,925.00
5-9	415V	41 – 141	60 – 37	1.5 / 2.0	32mm	2,405.00	3,265.00
5-10	415V	41 – 141	67 – 41	1.5 / 2.0	32mm	C/S*	3,315.00
5-11	415V	41 – 141	74 – 47	2.2 / 3.0	32mm	2,565.00	3,445.00
5-15	415V	41 – 141	101 – 63	2.2 / 3.0	32mm	2,835.00	3,725.00
5-20	415V	41 – 141	135 – 87	3.0 / 4.0	32mm	C/S*	4,415.00
5-24	415V	41 – 141	163 – 106	4.0 / 5.5	32mm	C/S*	4,815.00
5-29	415V	41 – 141	198 – 131	4.0 / 5.5	32mm	C/S*	5,205.00
10-4	415V	83 – 216	40 – 26	1.5 / 2.0	42mm	2,695.00	3,755.00
10-6	415V	83 – 216	61 – 39	2.2 / 3.0	42mm	2,905.00	3,985.00
10-8	415V	83 – 216	82 – 53	3.0 / 4.0	42mm	C/S*	4,455.00
10-9	415V	83 – 216	92 – 59	3.0 / 4.0	42mm	C/S*	4,645.00
10-12	415V	83 – 216	122 – 79	4.0 / 5.5	42mm	3,835.00	5,005.00
10-14	415V	83 – 216	143 – 94	5.5 / 7.5	42mm	4,765.00	-
10-16	415V	83 – 216	163 – 106	5.5 / 7.5	42mm	5,125.00	6,425.00
10-18	415V	83 – 216	185 – 123	7.5 / 10	42mm	5,435.00	6,775.00
10-22	415V	83 – 216	226 – 147	7.5 / 10	42mm	5,735.00	7,115.00

Remark: "C/S*" **COMING SOON**

*Prices are subject to change without prior notice. *

LEO VERTICAL MULTISTAGE CENTRIFUGAL PUMPS



LVR

LVS

Applications

- Water supply & drainage for high rise buildings, filtration and transfer at waterworks, pressure boosting in main pipe
- Washing & cleaning systems, boiler feeding, cooling water circulation, water treatment systems and auxiliary system
- Ultra-filtration systems, reverse osmosis systems, distillation systems, separators, swimming pools
- Sprinkler irrigation, drip-feed irrigation
- Food & beverage industry
- Fire fighting system

Features

- Totally enclosed & fan-cooled motor
- Liquid temperature: -20°C – 120°C
- Protection class: IP55
- Max pressure: 33bar

MODEL		FLOW (L/min)	HEAD (m)	POWER (kw / hp)	INLET / OUTLET	Price (RM)	
						LVR	LVS
15-1	415V	141 – 391	15 – 9	1.1 / 1.5	65mm	C/S*	3,515.00
15-2	415V	141 – 391	28 – 18	2.2 / 3.0	65mm	C/S*	3,905.00
15-3	415V	141 – 391	42 – 28	3.0 / 4.0	65mm	C/S*	4,345.00
15-5	415V	141 – 391	70 – 48	4.0 / 5.5	65mm	3,415.00	4,665.00
15-6	415V	141 – 391	81 – 47	5.5 / 7.5	65mm	4,395.00	5,745.00
15-7	415V	141 – 391	98 – 65	5.5 / 7.5	65mm	4,625.00	6,005.00
15-9	415V	141 – 391	125 – 84	7.5 / 10	65mm	C/S*	6,425.00
15-10	415V	141 – 391	140 – 95	11 / 15	65mm	6,935.00	8,275.00
15-14	415V	141 – 391	194 – 130	11 / 15	65mm	C/S*	8,895.00
15-17	415V	141 – 391	237 – 160	15 / 20	65mm	C/S*	9,885.00
20-3	415V	175 – 483	43 – 23	4.0 / 5.5	65mm	C/S*	4,425.00
20-5	415V	175 – 483	73 – 40	5.5 / 7.5	65mm	4,275.00	5,615.00
20-7	415V	175 – 483	102 – 57	7.5 / 10	65mm	C/S*	6,195.00
20-8	415V	175 – 483	117 – 67	11 / 15	65mm	6,695.00	8,005.00
20-10	415V	175 – 483	146 – 83	11 / 15	65mm	C/S*	8,285.00
20-12	415V	175 – 483	175 – 101	15 / 20	65mm	C/S*	9,245.00
20-14	415V	175 – 483	204 – 117	15 / 20	65mm	C/S*	9,475.00
20-17	415V	175 – 483	249 – 144	18.5 / 25	65mm	C/S*	10,875.00
32-2	415V	258 – 666	37 – 19.5	4.0 / 5.5	74mm	C/S*	6,855.00
32-3	415V	258 – 666	55.5 – 29.5	5.5 / 7.5	74mm	5,685.00	8,385.00
32-4	415V	258 – 666	74.5 – 40	7.5 / 10	74mm	6,225.00	8,985.00
32-5	415V	258 – 666	94.5 – 52	11 / 15	74mm	C/S*	11,105.00
32-6	415V	258 – 666	113 – 61.5	11 / 15	74mm	8,495.00	11,515.00
45-3	415V	366 – 966	73.5 – 47.5	11 / 15	80mm	7,815.00	11,115.00
45-4	415V	366 – 966	98.5 – 64	15 / 20	80mm	8,765.00	12,155.00
45-5	415V	366 – 966	124 – 81	18.5 / 25	80mm	10,095.00	13,635.00
64-6	415V	500 – 1416	107 – 170	37 / 50	100mm	14,855.00	–

Remark: "C/S*" COMING SOON

*Prices are subject to change without prior notice. *

LEO CENTRIFUGAL PUMPS



ACM, ACM-L



ACM-C2/CH2

Applications

- Transfer of clean water or other liquids similar to water in physical and chemical properties
- Domestic water supply
- Pressure boosting for high buildings
- Garden and agriculture irrigation
- Industrial use

Features

- Copper winding
- Built-in thermal protector
- Anti-rust treatment for moistened part
- AISI 304 fabricated shaft
- Low voltage operation
- Insulation class: F
- Protection class: IPX4



ACM-B2/B3/B4



ACM-BF2/BF3/BF4



XGM-1A



XHSM

Applications

- Transfer of clean water or other liquids similar to water in physical and chemical properties
- Water transfer from lake, river and well
- Agriculture irrigation
- Industrial use

Features

- Built-in thermal protector
- Anti-rust treatment for moistened part
- AISI 304 fabricated shaft
- Low voltage operation
- Insulation class: F
- Protection class: IPX4
- Semi-Open impeller (**XGM-1A**)
- Self priming (**XHSM**)

LEO CENTRIFUGAL PUMPS

MODEL	OLD MODEL		FLOW (L/min)	HEAD (m)	MAX. SUCT (m)	POWER (kw / hp)	INLET / OUTLET	Price (RM)
ACM 37 AC 37	XCM 130 , XSM 22 XC 130 , XS 22	220V 415V	30 – 90	20 – 12	8	0.37 / 0.5	1" x 1"	355.00
ACM 75 AC 75	XCM 158 , XSM 53 XC 158 , XS 53	220V 415V	30 – 100	34 – 16	8	0.75 / 1.0	1" x 1"	515.00
ACM 75B2 AC 75B2	XHM/5A , XHM/5B XH/5A , XH/5B	220V 415V	50 – 500	14 – 5.5	8	0.75 / 1.0	2" x 2"	535.00
ACM 110 AC 110	XCM 170M-1 XC 170M-1	220V 415V	30 – 120	39 – 20	8	1.1 / 1.5	1½" x 1"	725.00
AC 110L	XC-25/160B	415V	10 – 165	27.5 – 3	8	1.1 / 1.5	1½" x 1"	765.00
ACM 150 AC 150	- -	220V 415V	30 – 140	46 – 22	8	1.5 / 2.0	1½" x 1"	1,055.00
ACM 150B2 AC 150B2	XSM/70 , XHM/5AM XS/70 , XH/5AM	220V 415V	50 – 500	22 – 10	8	1.5 / 2.0	2" x 2"	785.00
ACM 150BF2	XNM 129A	220V	50 – 500	22 – 10	8	1.5 / 2.0	2" x 2"	885.00
ACM 150B3 AC 150B3	XHM/6B XH/6B	220V 415V	75 – 1000	15 – 5.5	8	1.5 / 2.0	3" x 3"	1,025.00
ACM 150BF3 AC 150BF3	XNM 130B XN 130B	220V 415V	75 – 1000	15 – 5.5	8	1.5 / 2.0	3" x 3"	1,185.00
ACM 150L AC 150L	XCM-25/160A XC-25/160A	220V 415V	10 – 180	33 – 4	8	1.5 / 2.0	1½" x 1"	825.00
AC 220	-	415V	10 – 150	54.5 – 28	8	2.2 / 3.0	1½" x 1"	1,035.00
ACM 220CH2 AC 220CH2	- -	220V 415V	100 - 450	30 – 21	8	2.2 / 3.0	2" x 2"	1,465.00
ACM 220B3 AC 220B3	XHM/6A XH/6A	220V 415V	75 – 1100	18.5 – 6.5	8	2.2 / 3.0	3" x 3"	1,265.00
ACM 220BF3 AC 220BF3	XNM 130A XN 130A	220V 415V	75 – 1100	18.5 – 6.5	8	2.2 / 3.0	3" x 3"	1,395.00
ACM 300CH2 AC 300C2	- -	220V 415V	100 – 450 100 – 800	37.5 – 25.5 29.5 – 11.5	8 8	3.0 / 4.0 3.0 / 4.0	2" x 2" 2" x 2"	1,525.00 1,525.00
ACM 300B3 AC 300B3	XHM/7B XH/7B	220V 415V	75 – 1000	20.5 – 10.5	8	3.0 / 4.0	3" x 3"	1,355.00
AC 300B4	XH/7BR	415V	75 – 1100	20.5 – 10.5	8	3.0 / 4.0	4" x 4"	1,425.00
AC 400C2	-	415V	100 – 900	38.5 – 13	8	4.0 / 5.5	2" x 2"	1,995.00
ACM 400BF4 AC 400BF4	XHM/7AR XH/7AR	220V 415V	400 – 1500	16 – 12.5	8	4.0 / 5.5	4" x 4"	2,215.00
AC 550C2	-	415V	100 – 900	45.5 – 15	8	5.5 / 7.5	2" x 2"	2,115.00
XGM-1A XG-1A	- -	220V 415V	10 - 245	17 - 1	8	0.75 / 1.0	1½" x 1½"	555.00
XCM 40/160A XC 40/160A	- -	220V 415V	50 – 230	38 – 20	8	1.5 / 2.0	1½" x 1½"	1,005.00
XSM 80 XS 80	- -	220V 415V	50 – 450	34 – 13	8	2.2 / 3.0	2" x 2"	1,165.00
XHSM 1500	-	220V	10 – 270	15 – 2.5	8	1.1 / 1.5	2" x 2"	935.00
XHSM 2000 XHS 2000	- -	220V 415V	10 – 330	21 – 2.5	8	1.5 / 2.0	2" x 2"	1,145.00

LEO MULTISTAGE CENTRIFUGAL PUMPS



2ACM



3ACM, 4ACM



3XCM, 4XCM, 5XCM



4XCM-120S, 5XCM-120S

Applications

- Transfer of clean water or other liquids similar to water in physical and chemical properties
- Agriculture irrigation
- Industrial use
- Pressure boosting
- Fire fighting

Features

- Cooper winding
- Built-in thermal protector
- Anti-rust treatment for moistened part
- AISI 304 fabricated shaft
- Insulation class: F
- Protection class: IPX4

MODEL	OLD MODEL		FLOW (L/min)	HEAD (m)	MAX. SUCT (m)	POWER (kw / hp)	INLET / OUTLET	PRICE (RM)
2ACM 110	2XCM25/140M	220V	20 – 142	46 – 22	8	1.1 / 1.5	1½" x 1"	905.00
2ACM 150	2XCM25/160B	220V	20 – 162	55 – 20	8	1.5 / 2.0	1½" x 1"	1,025.00
2AC 150	2XC25/160B	415V						
2ACM 220	2XCM25/160A	220V	20 - 184	63 – 20	8	2.2 / 3.0	1½" x 1"	1,345.00
2AC 220	2XC25/160A	415V						
2ACM 300H	2XCM32/200C	220V	40 - 255	62 – 21	8	3.0 / 4.0	1½" x 1¼"	1,775.00
2AC 300H	2XC32/200C	415V		67 – 33				
2AC 400H	-	415V	40 – 250	79.5 – 45.5	8	4.0 / 5.5	1½" x 1¼"	1,975.00
3ACM 45	3XCM80	220V	5 – 70	34 – 9	8	0.45 / 0.6	1" x 1"	485.00
4ACM 60	4XCM80	220V	5 – 70	46 – 10	8	0.6 / 0.85	1" x 1"	575.00
3ACM-100S	3XCM-100S	220V	5 – 78	33.5 – 5	8	0.6 / 0.8	1" x 1"	525.00
4ACM-100S	4XCM-100S	220V	5 – 90	43.5 – 5	8	0.75 / 1.0	1" x 1"	605.00
4XCM-120S	-	220V	100	48	8	1.1 / 1.5	1" x 1"	665.00
4XCM-100SA	-	220V	100	49	8	1.1 / 1.5	1" x 1"	865.00
5XCM-100S	-	220V	5 – 90	51 – 10	8	0.9 / 1.25	1" x 1"	715.00
5XCM-120S	-	220V	100	60	8	1.3 / 1.75	1" x 1"	735.00
5XCM-100SA	-	220V	100	60	8	1.3 / 1.75	1" x 1"	935.00

LEO STAINLESS STEEL CENTRIFUGAL PUMPS



AMS

Applications

- Transfer clean water or other liquids similar to water in physical and chemical properties
- Water circulation and water treatment system
- Agricultural irrigation

Features

- Stainless steel pump body
- AISI 304 fabricated shaft
- Built-in thermal protector for single phase motor
- Insulation class: F
- Protection class: IPX4

MODEL	OLD MODEL		FLOW (L/min)	HEAD (m)	POWER (kw / hp)	INLET / OUTLET	PRICE (RM)
AMSM 70/0.37 AMS 70/0.37	XMSM 70/0.37 XMS 70/0.37	220V 415V	10 – 80	21 – 12	0.37 / 0.5	1¼" x 1"	605.00
AMSM 70/0.55 AMS 70/0.55	XMSM 70/0.55 XMS 70/0.55	220V 415V	10 – 80	28 – 19	0.55 / 0.75	1¼" x 1"	645.00
AMSM 70/0.75 AMS 70/0.75	XMSM 70/0.75 XMS 70/0.75	220V 415V	10 – 80	31 – 23	0.75 / 1.0	1¼" x 1"	735.00
AMSM 120/0.55 AMS 120/0.55	XMSM 120/0.55 XMS 120/0.55	220V 415V	10 – 160	20 – 9	0.55 / 0.75	1¼" x 1"	635.00
AMSM 120/1.1 AMS 120/1.1	XMSM 120/1.1 XMS 120/1.1	220V 415V	10 – 160	30 - 14	1.1 / 1.5	1¼" x 1"	775.00
AMSM 210/1.1 AMS 210/1.1	XMSM 210/1.1 XMS 210/1.1	220V 415V	25 - 290	24 – 18	1.1 / 1.5	1½" x 1¼"	785.00
AMSM 210/1.5 AMS 210/1.5	XMSM 210/1.5 XMS 210/1.5	220V 415V	25 - 290	29 – 22	1.5 / 2.0	1½" x 1¼"	965.00
AMSM 210/2.2 AMS 210/2.2	XMSM 210/2.2 XMS 210/2.2	220V 415V	25 - 290	33 – 27	2.2 / 3.0	1½" x 1¼"	1,075.00
AMSM 370/1.1 AMS 370/1.1	XMSM 370/1.1 XMS 370/1.1	220V 415V	25 – 420	20 – 12	1.1 / 1.5	2" x 1¼"	785.00
AMSM 370/1.5 AMS 370/1.5	XMSM 370/1.5 XMS 370/1.5	220V 415V	25 – 450	23 – 16	1.5 / 2.0	2" x 1¼"	965.00
AMS 370/2.2	XMS 370/2.2	415V	25 - 520	28 - 17	2.2 / 3.0	2" x 1¼"	1,065.00

LEO STANDARD CENTRIFUGAL PUMPS



XST

Applications

- Water in air conditioning system
- Circulation & transfer of water
- Agricultural irrigation

Features

- Cast iron pump body
- Stainless steel shaft
- Cast iron/stainless steel impeller
- Overload protection
- Insulation class: F
- Protection class: IP54

MODEL		FLOW (L/min)	HEAD (m)	POWER (kw / hp)	INLET / OUTLET	PRICE (RM)
XST-32/160/15*	415V	100 – 300	25 – 12	1.5 / 2.0	2" x 1¼"	1,315.00
XST-32/160/22*	415V	100 – 400	31 – 14	2.2 / 3.0	2" x 1¼"	1,385.00
XST-32/160/30*	415V	100 – 450	35 – 17	3.0 / 4.0	2" x 1¼"	1,745.00
XST-32/200/30*	415V	100 – 450	45 – 20	3.0 / 4.0	2" x 1¼"	2,015.00
XST-32/200/40*	415V	100 – 450	54 – 26	4.0 / 5.5	2" x 1¼"	2,155.00
XST-32/250/75**	415V	100 – 400	98 – 50	7.5 / 10	2" x 1¼"	3,225.00
XST-40/125/15	415V	300 – 450	18.5 – 6	1.5 / 2.0	2½" x 1½"	1,575.00
XST-40/160/30	415V	300 – 700	32 – 15	3.0 / 4.0	2½" x 1½"	1,995.00
XST-40/160/40	415V	300 – 800	38 – 20	4.0 / 5.5	2½" x 1½"	2,135.00
XST-40/200/55*	415V	300 – 700	46 – 27	5.5 / 7.5	2½" x 1½"	2,655.00
XST-40/200/75*	415V	300 – 800	53.6 – 36.5	7.5 / 10	2½" x 1½"	2,855.00
XST-40/250/92*	415V	300 – 800	59 – 39.8	9.2 / 12.5	2½" x 1½"	6,545.00
XST-50/125/22	415V	600 – 900	17 – 6	2.2 / 3.0	2½" x 2"	1,845.00
XST-50/125/30	415V	600 – 900	20 – 8.5	3.0 / 4.0	2½" x 2"	1,955.00
XST-50/125/40	415V	600 – 1200	24.5 – 11.5	4.0 / 5.5	2½" x 2"	2,075.00
XST-50/160/55	415V	600 – 1200	32.5 – 15	5.5 / 7.5	2½" x 2"	2,565.00
XST-50/160/75	415V	600 – 1200	40 – 21.5	7.5 / 10	2½" x 2"	2,715.00
XST-50/200/110*	415V	600 – 1200	58 – 29	11 / 15	2½" x 2"	6,365.00
XST-50/250/150*	415V	600 – 1400	68 – 41	15 / 20	2½" x 2"	7,065.00
XST-50/250/185*	415V	600 – 1400	73.2 – 47	18.5 / 25	2½" x 2"	7,475.00
XST-50/250/220*	415V	600 – 1400	83 – 61	22 / 30	2½" x 2"	8,915.00
XST-65/125/40	415V	800 – 1500	19 – 11	4.0 / 5.5	3" x 2½"	2,355.00
XST-65/125/55	415V	800 – 1800	23 – 13.5	5.5 / 7.5	3" x 2½"	2,615.00
XST-65/125/75	415V	800 – 2000	27 – 18	7.5 / 10	3" x 2½"	2,805.00
XST-65/160/110	415V	900 – 2000	36 – 23	11 / 15	3" x 2½"	6,375.00
XST-65/160/150	415V	900 – 2000	42 – 30	15 / 20	3" x 2½"	6,885.00
XST-65/200/220	415V	900 – 2000	60 – 44	22 / 30	3" x 2½"	8,815.00
XST-65/250/300	415V	900 – 2300	75 – 54	30 / 40	3" x 2½"	12,085.00
XST-65/250/370	415V	900 – 2300	88 – 68	37 / 50	3" x 2½"	13,245.00
XST-80/160/110	415V	1500 – 3000	28 – 12	11 / 15	4" x 3"	6,525.00

*=AISI304 impeller, **=Double AISI304 impeller

LEO SINGLE STAGE CENTRIFUGAL PUMPS



XZS

Applications

- Water supply and irrigation
- Water feeding and pure water treatment system
- Washing and cleaning system

Features

- IE2 motor
- Closed coupled construction
- Insulation class: F
- Protection class: IP55

MODEL	OLD MODEL		FLOW (L/min)	HEAD (m)	POWER (kw / hp)	INLET / OUTLET (mm)	PRICE (RM)
XZS 50-32-160/22	XZS 50-32-160/2.2	415V	100 – 333	33.5 – 27	2.2 / 3.0	50 x 32	2,675.00
XZS 50-32-200/40	XZS 50-32-200/4.0	415V	100 – 360	51 – 43	4.0 / 5.5	50 x 32	3,405.00
XZS 65-40-200/75	-	415V	200 – 700	53 – 44.5	7.5 / 10	65 x 40	4,245.00
XZS 65-50-125/22	XZS 65-40-125/2.2	415V	200 – 600	23.5 – 16.5	2.2 / 3.0	65 x 50	2,585.00
XZS 65-50-160/40	XZS 65-40-160/4.0	415V	200 – 700	35.5 – 26	4.0 / 5.5	65 x 50	3,135.00
-	XZS 65-40-200/11	415V	83 – 670	64 - 59	11 / 15	65 x 50	6,565.00
XZS 80-65-160/75	XZS 65-50-160/7.5	415V	400 – 1200	36 – 24	7.5 / 10	80 x 65	4,065.00
XZS 80-50-200/110	XZS 65-50-200/11	415V	500 - 1200	53 – 41	11 / 15	80 x 65	7,935.00

LEO SEMI-OPEN IMPELLER S/S CENTRIFUGAL PUMPS



ABK

Applications

- Circulation cleaning system of various production line
- Transporting media containing impurities

Features

- Stainless steel pump body
- AISI 304 fabricated shaft
- Insulation class: F
- Protection class: IPX4

MODEL		FLOW (L/min)	HEAD (m)	POWER (kw / hp)	INLET / OUTLET	PRICE (RM)
ABK120	415V	100 – 300	11 – 9	0.9 / 1.2	1½" x 1½"	825.00
ABK150D ABK150	220V 415V	100 – 550	9.5 – 5	1.1 / 1.5	2" x 2"	1,155.00
ABK200D ABK200	220V 415V	100 – 700	12.7 – 6.5	1.5 / 2.0	2" x 2"	1,175.00
ABK300	415V	100 – 950	15 – 7.5	2.2 / 3.0	2½" x 2"	1,415.00
ABK400	415V	100 – 1100	17.5 – 7.5	3.0 / 4.0	2½" x 2"	1,455.00

LEO JET & GARDEN JET PUMPS, JET PUMP FOR DEEP WELLS



AJM



AJM-S



AJDM

Applications

- Transfer of clean water or other liquids similar to water in physical and chemical properties
- Lifting water from wells
- Garden irrigation
- Pressure boosting

Features

- Copper winding
- Stainless steel pump body (**AJM-S**)
- Stainless steel impeller
- Built-in thermal protector
- Anti-rust treatment for moistened parts
- AISI 304 fabricated shaft
- Low voltage operation
- Insulation class: F



LKJ-P



LKJ-S



XKJ-PA

Applications

- Transfer of clean water or other liquids similar to water in physical and chemical properties
- Domestic water supply / drainage in garden (**LKJ**)

Features

- Built-in thermal protector
- AISI 304 fabricated shaft
- Insulation class: F
- Protection class: IPX4

LEO JET & GARDEN JET PUMPS, JET PUMP FOR DEEP WELLS

MODEL	OLD MODEL		FLOW (L/min)	HEAD (m)	MAX. SUCT (m)	POWER (kw / hp)	INLET / OUTLET	PRICE (RM)
AJM 30	XJWM/1C-E	220V	5 – 35	30 – 14	9	0.3 / 0.4	1" X 1"	335.00
AJM 45	XJM 60L	220V	5 – 35	36 – 18	9	0.45 / 0.6	1" X 1"	365.00
AJM 45S	-	220V	5 – 40	35 – 16	9	0.45 / 0.6	1" X 1"	365.00
AJM 75	XJM 100L XJM 100LB	220V	5 – 65	38 – 23	9	0.75 / 1.0	1" X 1"	515.00
AJ 75	XJM 100LC XJWM/10M	415V						
AJM 75S	XJM 101C	220V	5 – 55	40 – 20	9	0.75 / 1.0	1" X 1"	495.00
AJM 90	-	220V	5 – 65	46 – 30	9	0.9 / 1.2	1" X 1"	545.00
AJM 90S	-	220V	5 – 60	44 – 22	9	0.9 / 1.2	1" X 1"	525.00
AJM 110 AJ 110	XJWM/3CM XJW/3CM	220V 415V	20 – 100	48 – 22	9	1.1 / 1.5	1¼" X 1"	855.00
AJM 110H	XJWM/3CH	220V	10 – 60	55 – 33	9	1.1 / 1.5	1¼" X 1"	855.00
AJM 150H	XJWM/3BH	220V	10 – 60	66 – 41	9	1.5 / 2.0	1¼" X 1"	925.00
AJM 150L	XJWM/3BL	220V	40 – 140	44 – 24	9	1.5 / 2.0	1¼" X 1"	925.00
-	XKJ-600S	220V	60	35	8	0.6 / 0.8	1" X 1"	335.00
LKJ-601P	XKJ-601P	220V	60	35	8	0.6 / 0.8	1" X 1"	285.00
LKJ-601S	XKJ-601S	220V	60	35	8	0.6 / 0.8	1" X 1"	345.00
LKJ-800S	XKJ-800S	220V	60	40	8	0.8 / 1.1	1" X 1"	355.00
LKJ-801P	XKJ-801P	220V	60	40	8	0.8 / 1.1	1" X 1"	295.00
-	XKJ-901PA	220V	60	42	8	0.9 / 1.2	1" X 1"	675.00
-	XKJ-909PA	220V	60	42	8	0.9 / 1.2	1" X 1"	795.00
-	XKJ-909PE	220V	60	42	8	0.9 / 1.2	1" X 1"	705.00
AJDM 55/4H	XDPM-255A	220V	5 – 24	45 – 13	40	0.55 / 0.75	1¼" X 1" X 1"	625.00
AJDM 75/2H	XDPM-370A/1	220V	5 – 30	50 – 17	40	0.75 / 1.0	1¼" X 1" X 1"	705.00
AJDM 75/4H	XDPM-370A	220V	5 – 70	55 – 17	40	0.75 / 1.0	1¼" X 1" X 1"	665.00
-	XDPM-370A (AUTO)	220V	5 – 70	55 – 17	40	0.75 / 1.0	1¼" X 1" X 1"	835.00
AJDM 110/2H	XDPM-505A/1	220V	5 – 30	70 – 28	40	1.1 / 1.5	1¼" X 1" X 1"	935.00
AJDM 110/4H	XDPM-505A	220V	5 – 90	80 – 28	40	1.1 / 1.5	1¼" X 1" X 1"	905.00

LEO END SUCTION CENTRIFUGAL PUMPS



LEP

Applications

- Water supply system
- Pressure boosting
- Commercial buildings heating system
- Industrial applications
- Fire fighting

Features

- Cast iron/stainless steel (optional) pump body
- Stainless steel shaft
- Bronze/cast iron impeller (Optional: stainless steel impeller)
- NSK bearing
- Max operation pressure: 10 bar

MODEL	RPM	FLOW (L/min)	HEAD (m)	MAX. SUCT (m)	POWER (kw / hp)	INLET / OUTLET	PRICE (RM)
LEP 50-32-160	1450	276	11	2.5	0.37 / 0.5	2" x 1 1/4"	1,855.00
	2900	432	43	3	4.0 / 5.5		
LEP 50-32-200	1450	240	15	2.5	1.5 / 2.0	2" x 1 1/4"	2,165.00
	2900	480	60	3	11 / 15		
LEP 65-40-130	1450	396	6.5	2.5	0.37 / 0.5	2 1/2" x 1 1/2"	1,785.00
	2900	810	26	3	4.0 / 5.5		
LEP 65-40-160	1450	372	10.5	2	0.75 / 1.0	2 1/2" x 1 1/2"	1,895.00
	2900	750	40	3	5.5 / 7.5		
LEP 65-40-200	1450	432	16	2	1.5 / 2.0	2 1/2" x 1 1/2"	2,175.00
	2900	840	63	3	11 / 15		
LEP 65-40-260	1450	510	24	2	3.0 / 4.0	2 1/2" x 1 1/2"	2,625.00
	2900	1,020	95	3	22 / 30		
LEP 65-50-160	1450	140	9	2	1.5 / 2.0	2 1/2" x 2"	1,975.00
	2900	300	38	3	11 / 15		
LEP 65-50-200	1450	720	16	2	2.2 / 3.0	2 1/2" x 2"	2,325.00
	2900	1,500	62	3	17 / 23		
LEP 65-50-260	1450	1,080	26	2	5.0 / 7.0	2 1/2" x 2"	2,685.00
	2900	1,680	85	3	60 / 80		
LEP 65-50-320	1450	960	37	2	11 / 15	2 1/2" x 2"	3,965.00
LEP 80-65-160	1450	1,080	11	2	1.5 / 2.0	3" x 2 1/2"	2,155.00
	2900	2,400	42	3	15 / 20		
LEP 80-65-200	1450	1,440	16	2	4.0 / 5.5	3" x 2 1/2"	2,465.00
	2900	2,760	66	4	22 / 30		
LEP 80-65-260	2900	2,760	100	5	40 / 55	3" x 2 1/2"	3,615.00
LEP 80-65-320	1450	1,680	38.5	2	11 / 15	3" x 2 1/2"	4,345.00
LEP 100-80-200	1450	2,400	16	2	5.5 / 7.5	4" x 3"	3,265.00
	2900	3,960	64	3	40 / 55		
LEP 100-80-260	1450	2,400	25	2	11 / 15	4" x 3"	3,795.00
	2900	3,720	100	3	60 / 80		
LEP 100-80-320	1450	2,760	37	2	15 / 20	4" x 3"	4,575.00
LEP 100-80-400	1450	2,640	58	2	30 / 40	4" x 3"	6,465.00
LEP 125-100-260	1450	3,780	26	2	11 / 15	5" x 4"	3,995.00
LEP 125-100-320	1450	3,300	39	2	22 / 30	5" x 4"	4,665.00

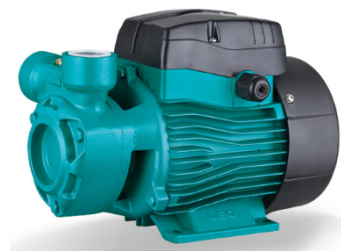
LEO PERIPHERAL, SELF-PRIMING PERIPEHRAL PUMPS



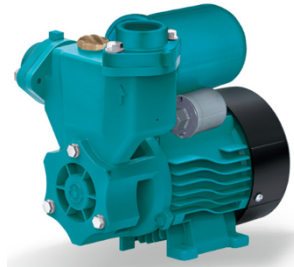
XKM



APM



AQM



LKSM 130



APSM

Applications

- Transfer of clean water or other liquids similar to water in physical and chemical properties
- Domestic water supply with pressure boosting
- Automatic water sprinkler system
- Small air conditioning system

Features

- Copper winding
- Brass impeller
- Built-in thermal protector
- Anti-rust treatment for moistened part
- AISI 304 fabricated shaft
- Insulation class: F
- Protection class: IPX4
- Anti-block system (**APM/APSM**)

LEO PERIPHERAL, SELF-PRIMING PERIPEHRAL PUMPS



XKSM-A



APSM-AEW

Applications

- Transfer of clean water or other liquids similar to water in physical and chemical properties
- Domestic water supply with pressure boosting
- Automatic water sprinkler system
- Small air conditioning system

XKSM-A/APSM-AEW Features

- 3 seconds delay of pump start after socket plugged in to avoid potential danger caused by electric sparks
- Automatic stop in 6 minutes in case of no water inside
- Automatic switch to small flow control system with small water flow

APSM-AEW Features

- Automatic 10 seconds operation every 72 hours of non usage for anti-block protection
- Anti-freezing in low temperature environment, automatic start and stop control to maintain water temperature inside pump between 4°C and 60°C
- LCD screen with on/off pressure setting, operation system and malfunction alarm
- Remotely monitored and controlled by computer or smart phone

MODEL	OLD MODEL		FLOW (L/min)	HEAD (m)	MAX. SUCT (m)	POWER (kw / hp)	INLET / OUTLET	PRICE (RM)
XKM 50-1	-	220V	2 – 25	22 – 3	8	0.11 / 0.15	1" x 1"	185.00
APM 37	XKM 60-1 LKM 60-1	220V	5 – 40	35 – 2	8	0.37 / 0.5	1" x 1"	225.00
APM 110	-	220V	5 – 70	80 – 10	8	1.1 / 1.5	1" x 1"	645.00
AQM 75 AQ 75	XQM 80 XQ 80	220V 415V	5 – 45	70 – 5	8	0.75 / 1.0	1" x 1"	385.00
XKSM 125	-	220V	5 – 30	25 – 2	8	0.125 / 0.17	1" x 1"	305.00
XKSM 126	-	220V	5 – 30	25 – 2	8	0.125 / 0.17	1" x 1"	305.00
XKSM 115A	-	220V	2.5 – 30	25 – 2.5	8	0.115 / 0.15	¾" X ¾"	685.00
XKSM 155A	AKSM 155A	220V	2.5 – 30	32 – 2.5	8	0.155 / 0.2	1" x 1"	725.00
LKSM 130	XKSM 130	220V	2.5 – 30	28 – 5	9	0.125 / 0.17	1" x 1"	345.00
APSM 37	XKSM 60-1	220V	5 – 30	35 – 5	9	0.37 / 0.5	1" x 1"	265.00
APSM 37AEW	-	220V	5 – 40	35 – 0	9	0.37 / 0.5	1" x 1"	655.00
APSM 75 AEW	-	220V	5 – 45	49 – 1	9	0.75 / 1.0	1" x 1"	785.00

LEO CIRCULATION PUMPS



LRP

Applications

- HVAC and pressure boosting of hot water in family
- Water circulation for central & district heating system
- Domestic hot water circulation
- Automatic pressure boosting

Features

- Noryl impeller, heat resistance up to 150°C
- 99% alumina ceramic shaft
- Three speed motor
- Protection class: IP44
- Insulation class: F



LRP-A

Applications

- Pressure boosting for domestic water supply
- Floor heating system
- Solar pumping system
- Automatic pressure boosting

Features

- Anti-rust cast iron pump body
- Noryl impeller, heat resistance up to 150°C
- 99% alumina ceramic shaft
- Protection class: IP42
- Insulation class: H



LPP

Applications

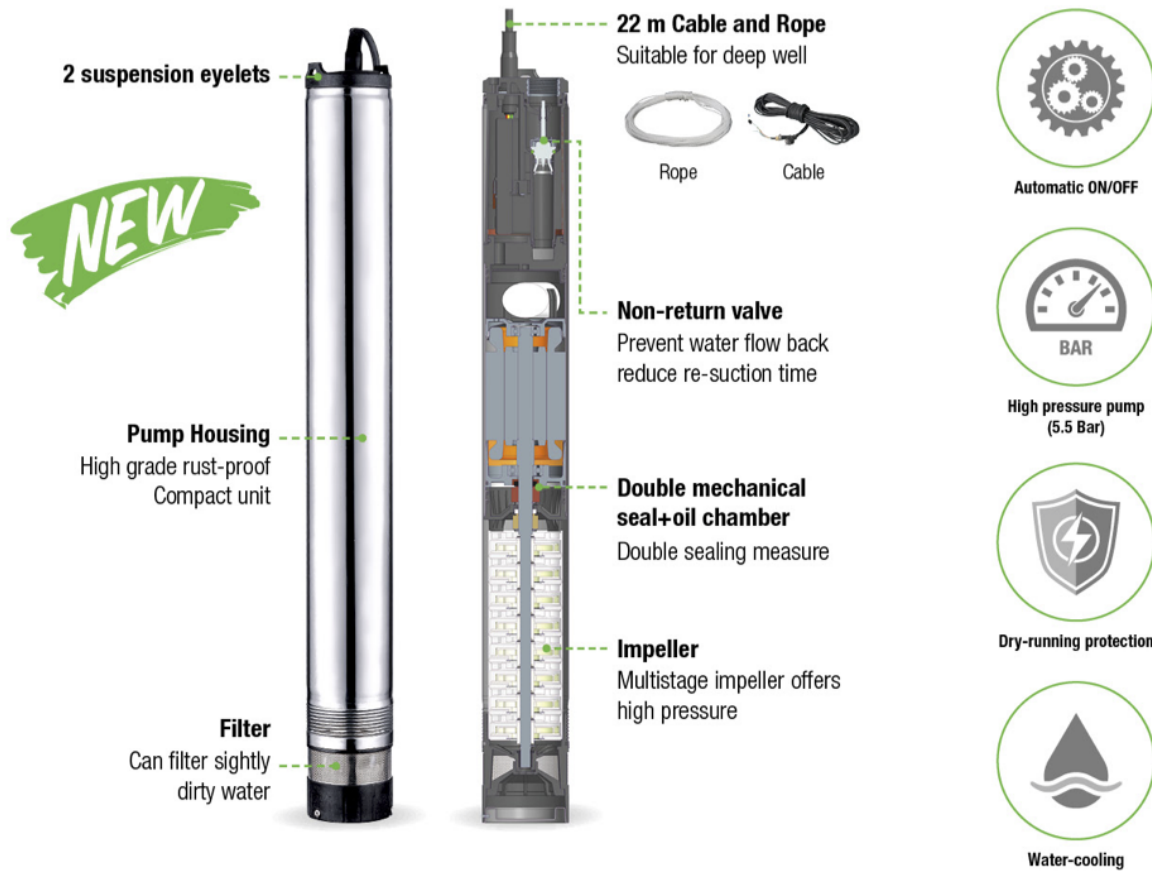
- HVAC: circulation of hot water, boiler mix-flow, etc
- Cooling water circulation
- Filtration and transfer at water works
- Industrial applications
- Fire fighting

Features

- Stainless steel shaft
- Cast iron/stainless steel impeller
- Max operation pressure: 16 bar
- Dry running protection with mechanical seal
- Insulation class: F

MODEL		FLOW (L/min)	HEAD (m)	SUCTION (m)	POWER (kw / hp)	INLET / OUTLET	PRICE (RM)
LRP 32-80/180	220V	170/118/67	7.3/6.7/5.4	-	0.27/0.245/0.16	42mm	385.00
LRP 40-80F/250	220V	170/113/65	7.3/6.7/5.4	-	0.27/0.245/0.16	42mm	465.00
LRP 15-90A/160	220V	25	9	-	0.123	15mm	295.00
LPP 40-13-0.75/2	415V	25 – 260.7	12 – 10	2	0.75 / 1.0	40mm	2,065.00
LPP 50-12-1.1/2	415V	42 – 430	15 – 11	2	1.1 / 1.5	50mm	2,205.00
LPP 50-21-2.2/2	415V	42 – 580	24 – 17	2	2.2 / 3.0	50mm	2,485.00
LPP 50-28-4/2	415V	50 – 716	33 – 23	2	4 / 5.5	50mm	2,935.00
LPP 80-14-3/2	415V	83 – 1250	17 – 10	3	3.0 / 4.0	80mm	3,115.00
LPP 100-24-15/2	415V	250 – 3000	30 – 20	6	15 / 20	100mm	8,075.00

LEO INTELLIGENT DEEP WELL PUMP



Application



Transferring water from deep well



Domestic water supply



Garden irrigation



Agriculture irrigation

MODEL	LDW-6-55-1100E
Rated Power	1,100 W
Max. Head	55 m
Max Flow	100 L/min
Max. Immersion Depth	19 m
Impeller Stage	6
Outlet	1"
Pump Diameter	98 mm
Length of Power Cable	22 m
Protection Class	IPX8
Packing Dimension	965 x 140 x 220 mm
PRICE	RM 985.00

LEO STAINLESS STEEL BOREHOLE PUMPS



XR

Applications

- For water supply from wells or reservoirs
- For domestic use, civil use and industrial applications
- Agricultural irrigation

Features

- Minimum well diameter: 3"
- Maximum immersion: 80m
- Impeller material: Polyoxymethylene (POM)

MODEL	OLD MODEL		FLOW (L/min)	HEAD (m)	MAX. SUCT (m)	POWER (kw / hp)	INLET / OUTLET	Price (RM)
3XRM3/11-0.37	3XRM2.5/11-0.37	220V	11 – 47	43 – 11	80	0.37 / 0.5	1"	625.00
3XRM3/21-0.75	3XRM2.5/21-0.75	220V	11 – 47	80 – 27	80	0.75 / 1.0	1"	805.00
3XRM3/31-1.1	3XRM2.5/31-1.1	220V	11 – 47	113 – 37	80	1.1 / 1.5	1"	995.00
4XRM3/7-0.37	4XRM3/6-0.37	220V	20 – 80	40 – 12	80	0.37 / 0.5	1½"	675.00
4XRM3/13-0.75	4XRM3/11-0.75	220V	20 – 80	91 – 27	80	0.75 / 1.0	1½"	815.00
4XRM3/18-1.1	4XRM3/17-1.1	220V	20 – 80	120 – 32	80	1.1 / 1.5	1½"	945.00
4XRM3/22-1.5	4XRM3/21-1.5	220V	20 – 80	150 – 44	80	1.5 / 2.0	1½"	1,085.00
4XRM3/30-2.2	-	220V	20 – 80	210 - 66	80	2.2 / 3.0	1½"	1,455.00
4XR3/30-2.2	-	415V	20 – 80	210 - 66	80	2.2 / 3.0	1½"	1,525.00
4XR3/40-3	-	415V	20 – 80	280 – 85	80	3.0 / 4.0	1½"	1,865.00
4XR3/50-4	-	415V	20 – 80	350 – 100	80	4.0 / 5.5	1½"	2,285.00
4XRM6/5-0.37	4XRM6/4-0.37	220V	40 – 140	31- 11	80	0.37 / 0.5	2"	665.00
4XRM6/8-0.75	4XRM6/9-0.75	220V	40 – 140	50 – 17	80	0.75 / 1.0	2"	785.00
4XRM6/11-1.1	4XRM6/12-1.1	220V	40 – 140	70 – 20	80	1.1 / 1.5	2"	905.00
4XRM6/15-1.5	4XRM6/14-1.5	220V	40 – 140	94 – 25	80	1.5 / 2.0	2"	1,035.00
4XRM6/20-2.2	4XRM6/22-2.2	220V	40 – 140	132 - 30	80	2.2 / 3.0	2"	1,375.00
4XR6/20-2.2	4XR6/22-2.2	415V	40 – 140	132 - 30	80	2.2 / 3.0	2"	1,445.00
4XR6/26-3	4XR6/30-3	415V	40 – 140	176 – 34	80	3.0 / 4.0	2"	1,705.00
4XR6/34-4	4XR6/38-4	415V	40 – 140	220 – 45	80	4.0 / 5.5	2"	2,115.00
4XR12/26-5.5	4XR12/23-5.5	415V	70 – 270	127 – 33	80	5.5 / 7.5	2"	2,445.00

LEO STAINLESS STEEL BOREHOLE PUMPS



XRS



Applications

- For water supply from wells or reservoirs
- For domestic use, civil use and industrial applications
- Agricultural irrigation

Features

- Minimum well diameter: 4"
- Maximum immersion: 80m
- Impeller material: Stainless Steel 304

MODEL	OLD MODEL		FLOW (L/min)	HEAD (m)	MAX. SUCT (m)	POWER (kw / hp)	INLET / OUTLET	Price (RM)
4XRSM3/7-0.37	4XRSM3/6-0.37	220V	10 – 70	35 – 16	80	0.37 / 0.5	1½"	845.00
4XRSM3/12-0.75	-	220V	10 – 70	71 – 32	80	0.75 / 1.0	1½"	1,155.00
4XRS3/12-0.75	-	415V	10 – 70	71 – 32	80	0.75 / 1.0	1½"	1,335.00
4XRSM3/18-1.1	-	220V	10 – 70	106 – 48	80	1.1 / 1.5	1½"	1,475.00
4XRS3/18-1.1	-	415V	10 – 70	106 – 48	80	1.1 / 1.5	1½"	1,635.00
4XRSM3/25-1.5	-	220V	10 – 70	148 – 67	80	1.5 / 2.0	1½"	1,835.00
4XRS3/25-1.5	-	415V	10 – 70	148 – 67	80	1.5 / 2.0	1½"	1,985.00
4XRSM3/33-2.2	-	220V	10 – 70	195 – 88	80	2.2 / 3.0	1½"	2,405.00
4XRS3/33-2.2	-	415V	10 – 70	195 – 88	80	2.2 / 3.0	1½"	2,475.00
4XRS3/45-3	-	415V	10 – 70	266 – 120	80	3.0 / 4.0	1½"	3,115.00
4XRS3/60-4	-	415V	10 – 70	354 - 160	80	4.0 / 5.5	1½"	3,965.00
4XRSM5/8-0.75	-	220V	10 – 110	49 – 18	80	0.75 / 1.0	1½"	1,005.00
4XRS5/8-0.75	-	415V	10 – 110	49 – 18	80	0.75 / 1.0	1½"	1,185.00
4XRSM5/12-1.1	-	220V	10 – 110	74 – 27	80	1.1 / 1.5	1½"	1,245.00
4XRS5/12-1.1	-	415V	10 – 110	74 – 27	80	1.1 / 1.5	1½"	1,405.00
4XRSM5/17-1.5	-	220V	10 – 110	104 – 38	80	1.5 / 2.0	1½"	1,545.00
4XRS5/17-1.5	-	415V	10 – 110	104 – 38	80	1.5 / 2.0	1½"	1,705.00
4XRSM5/25-2.2	-	220V	10 – 110	153- 56	80	2.2 / 3.0	1½"	2,145.00
4XRS5/25-2.2	-	415V	10 – 110	153- 56	80	2.2 / 3.0	1½"	2,215.00
4XRSM8/7-1.1	-	220V	20 – 180	39 – 20	80	1.1 / 1.5	2"	1,505.00
4XRS8/7-1.1	-	415V	20 – 180	39 – 20	80	1.1 / 1.5	2"	1,665.00
4XRSM8/10-1.5	-	220V	20 – 180	56 – 29	80	1.5 / 2.0	2"	1,795.00
4XRS8/10-1.5	-	415V	20 – 180	56 – 29	80	1.5 / 2.0	2"	1,955.00
4XRSM8/15-2.2	-	220V	20 – 180	84 - 43	80	2.2 / 3.0	2"	2,475.00
4XRS8/15-2.2	-	415V	20 – 180	84 - 43	80	2.2 / 3.0	2"	2,545.00
4XRS8/25-4	-	415V	20 – 180	134 – 69	80	4.0 / 5.5	2"	3,835.00

LEO SEWAGE SUBMERSIBLE PUMPS



XSP 20-9/1.1I



XSP 18-12/0.75S



XSP 14-7/1.1ID

Applications

- Wastewater drainage in factories, construction sites and commercial facilities
- Drainage system in municipal sewage treatment plants
- Drainage station in residential quarters
- Methane pools and field irrigation in countryside

Features

- Copper winding
- Built-in thermal protector
- AISI 304 fabricated shaft
- Automatic start and stop with float switch
- Insulation class: B
- Protection class: IP68

MODEL		FLOW (L/min)	HEAD (m)	IMMERSION DEPTH (m)	POWER (kw / hp)	OUTLET (mm)	PRICE (RM)
XSP 8-7/0.18I	220V	133	7	5	0.18 / 0.25	40 / 32 / 25	445.00
XSP 9-7.5/0.25I	220V	150	7.5	5	0.25 / 0.33	40 / 32 / 25	465.00
XSP 9-7.5/0.25S	220V	150	7.5	5	0.25 / 0.33	40 / 32 / 25	1,125.00
XSP 12-8.5/0.45I	220V	200	8.5	5	0.45 / 0.6	50	665.00
XSP 14-7/1.1ID	220V	233	7	5	1.1 / 1.5	50	945.00
XSP 15.6-9.5/0.55I	220V	260	9.5	5	0.55 / 0.73	50 / 40	625.00
XSP 16.2-22/1.5S	220V	270	22	5	1.5 / 2.0	40	2,455.00
XSP 18-12/0.75I	220V	300	12	5	0.75 / 1.0	50	805.00
XSP 18-12/0.75S	220V	300	12	5	0.75 / 1.0	50	2,265.00
XSP 18-12/1.3ID	220V	300	12	5	1.3 / 1.75	50	1,025.00
XSP 20-9/1.1I	220V	333	9	5	1.1 / 1.5	50	935.00
XSP 26.4-10/1.8ID	220V	440	10	5	1.8 / 2.4	75	1,365.00
XSP 32-17/1.5I	220V	533	17	5	1.5 / 2.0	50	1,175.00
XSP 42-17/2.2I	220V	700	17	5	2.2 / 3.0	75	1,465.00

LEO SEWAGE SUBMERSIBLE PUMPS



QDX-A



QDX-LA

Applications

- Small electrical irrigation and drainage equipment
- Rural well water pumping, farming irrigation and drainage
- Drainage of industrial/construction accumulated water, aquaculture, etc.

QDX-A Features

- Cast iron pump body with anti-rust treatment
- Liquid PH value: 6.5 – 8
- Copper winding
- Built-in thermal protector
- Stainless steel welded shaft
- Insulation class: B
- Protection class: IP68

QDX-LA Features

- Cast iron pump body, aluminum motor casing
- Double-end mechanical seal
- Liquid PH value: 6.5 – 8
- Maximum sand content: 0.1%, passage of suspended solids up to 0.2mm
- Copper winding
- Built-in thermal protector
- Stainless steel shaft
- Insulation class: F
- Protection class: IP68

MODEL		FLOW (L/min)	HEAD (m)	IMMERSION DEPTH (m)	POWER (kw / hp)	OUTLET (mm)	PRICE (RM)
QDX 1.5-15-0.37LA	220V	25 – 120	15.6 – 3.9	5	0.37 / 0.5	25	395.00
QDX 1.5-25-0.55LA	220V	25 – 120	26.5 – 10	5	0.55 / 0.73	25	465.00
QDX 1.5-32-0.75LA	220V	25 – 150	32.5 – 8.5	5	0.75 / 1.0	25	495.00
QDX 3-18-0.55LA	220V	25 – 200	19.2 – 3.7	5	0.55 / 0.73	25	455.00
QDX 6-18-0.75LA	220V	25 – 275	19.2 – 4.2	5	0.75 / 1.0	40	485.00
QDX 10-10-0.55LA	220V	25 – 275	15.2 – 3.8	5	0.55 / 0.73	50	465.00
QDX 10-16-0.75LA	220V	25 – 275	19.2 – 4.2	5	0.75 / 1.0	40	485.00
QDX 10-18-1.1A	220V	25 – 275	25.5 – 4	5	1.1 / 1.5	50	725.00
QDX 15-10-0.75LA	220V	25 – 475	10.9 – 2.7	5	0.75 / 1.0	50	505.00
QDX 15-14-1.1A	220V	25 – 500	14.9 – 3.1	5	1.1 / 1.5	65	715.00

LEO SEWAGE SUBMERSIBLE PUMPS



WQ (D)



WQ

Applications

- Wastewater drainage in factories, construction sites and commercial facilities
- Drainage system in municipal sewage treatment plants
- Drainage station in residential quarters
- Municipal projects
- Methane pools and field irrigation in countryside

Features

- Leak-proof detector
- Dual mechanical seal
- Oil jacket
- Insulation class: F
- Protection class: IPX8

MODEL		FLOW (L/min)	HEAD (m)	IMMERSION DEPTH (m)	IMPELLER PASSAGE (mm)	POWER (kw / hp)	OUTLET	PRICE (RM)
50 WQD 8-20-1.5 50 WQ 8-20-1.5	220V 415V	133	20	5	20	1.5 / 2.0	2"	1,025.00
50 WQD 10-10-0.75 50 WQ 10-10-0.75	220V 415V	166	10	5	25	0.75 / 1.0	2"	725.00
50 WQ 15-20-2.2	415V	250	20	5	25	2.2 / 3.0	2"	1,565.00
80 WQ 40-9-2.2	415V	666	9	5	30	2.2 / 3.0	3"	1,615.00
80 WQ 40-13-3	415V	666	13	5	30	3.0 / 4.0	3"	1,975.00
80 WQ 40-18-4	415V	666	18	5	30	4.0 / 5.5	3"	2,535.00
100 WQ 45-22-7.5	415V	750	22	5	35	7.5 / 10	4"	4,525.00
100 WQ 60-9-3	415V	1000	9	5	30	3.0 / 4.0	4"	2,005.00
100 WQ 60-13-4	415V	1000	13	5	30	4.0 / 5.5	4"	2,565.00
100 WQ 65-15-5.5	415V	1000	15	5	30	5.5 / 7.5	4"	3,295.00
100 WQ 65-22-7.5	415V	1500	31	5	30	7.5 / 10	4"	4,505.00
150 WQ 100-10-7.5	415V	1666	10	5	35	7.5 / 10	6"	4,615.00

LEO SEWAGE SUBMERSIBLE PUMPS



SWE



Impeller

Applications

- Drainage of agriculture sewage water
- Drainage in building and construction sites
- Domestic and municipal drainage
- Industrial drainage for food, leather, paper pulp, dyeing and printing, etc.

Features

- Max. Immersion Depth: 5m
- Double-end mechanical seal
- Insulation class: F
- Protection class: IPX8



SWP



Impeller



Cutter



Float Switch
(For Power ≤ 1.1kW)

Applications

- Used in pressure sewage system
- Transfer various wastewater and sewage
- Drainage of wastewater from individual residences, apartment buildings, recreational developments, etc.

Features

- Max. Immersion Depth: 5m
- **Semi-open vortex impeller & grinding system***
- Double-end mechanical seal
- Insulation class: F
- Protection class: IPX8

MODEL		FLOW (L/min)	HEAD (m)	IMPELLER PASSAGE (mm)	POWER (kw / hp)	OUTLET	PRICE (RM)
50 SWEM 8-20-1.5L 50 SWE 8-20-1.5L	230V 415V	133	20	15	1.5 / 2.0	2"	1,685.00
50 SWEM 15-20-2.2L 50 SWE 15-20-2.2L	230V 415V	250	20	25	2.2 / 3.0	2"	1,775.00
50 SWE 15-25-3L	415V	250	26	25	3.0 / 4.0	2"	1,785.00
80 SWE 40-9-2.2L	415V	666	9	30	2.2 / 3.0	3"	1,745.00
80 SWE 40-13-3L	415V	666	13	30	3.0 / 4.0	3"	1,865.00
80 SWE 40-18-4L	415V	666	18	30	4.0 / 5.5	3"	1,965.00
32 SWPM 3.6-17-1.1L/QG 32 SWP 3.6-17-1.1L/QG	230V 415V	60	17	-	1.1 / 1.5	1¼"	1,505.00 1,515.00
32 SWPM 3.6-23-1.5L/QG 32 SWP 3.6-23-1.5L/QG	230V 415V	60	23	-	1.5 / 2.0	1¼"	1,835.00 1,855.00
32 SWP 3.6-30-2.2L/QG	415V	60	30	-	2.2 / 3.0	1¼"	1,945.00
50 SWP 12-19-2.2L/QG	415V	200	19	-	2.2 / 3.0	2"	2,035.00
50 SWP 12-22-3L/QG	415V	200	22	-	3.0 / 4.0	2"	2,145.00
50 SWP 12-30-4L/QG	415V	200	30	-	4.0 / 5.5	2"	2,275.00

LEO SUBMERSIBLE DEWATERING PUMPS



KBZ

Applications

- Civil engineering
- Mines, quarries, coal ore & slurries
- Sewage treatment plants
- General pumping purposes

Features

- Rigid cast iron pump body
- High chrome alloy impeller
- Built-in thermal protection for hermetically sealed motor
- Insulation class: F
- Protection class: IP68

MODEL		MAX. FLOW (L/min)	MAX. HEAD (m)	IMMERSION DEPTH (m)	IMPELLER PASSAGE (mm)	POWER (kw / hp)	OUTLET	PRICE (RM)
KBZ 21.5	415V	450	22	25	8.5	1.5 / 2	2"	2,015.00
KBZ 22.2	415V	450	26	25	8.5	2.2 / 3	2"	2,495.00
KBZ 23.7	415V	480	34	25	8.5	3.7 / 5	2"	3,485.00
KBZ 31.5	415V	670	14.5	25	8.5	1.5 / 2	3"	2,055.00
KBZ 32.2	415V	830	21	25	8.5	2.2 / 3	3"	2,575.00
KBZ 33.7	415V	920	29	25	8.5	3.7 / 5	3"	3,565.00
KBZ 35.5	415V	1170	32	25	8.5	5.5 / 7.5	3"	4,515.00
KBZ 43.7	415V	1500	18	25	8.5	3.7 / 5	4"	3,665.00
KBZ 45.5	415V	1750	23	25	8.5	5.5 / 7.5	4"	4,625.00
KBZ 47.5	415V	1400	40	25	11.5	7.5 / 10	4"	6,615.00
KBZ 411	415V	1440	48.5	25	11.5	11 / 15	4"	8,035.00
KBZ 415	415V	1440	56	25	11.5	15 / 20	4"	9,685.00
KBZ 67.5	415V	2080	31	25	19.5	7.5 / 10	6"	6,515.00
KBZ 611	415V	2450	32	25	19.5	11 / 15	6"	9,135.00
KBZ 615	415V	2600	40	25	19.5	15 / 20	6"	9,725.00
80KBS44	415V	1650	14.8	25	30	4.0 / 5.5	3"	6,905.00

LEO GARDEN SUBMERSIBLE, STAINLESS STEEL SUBMERSIBLE, SUBMERSIBLE PERIPHERAL PUMPS



LKS-1102SE



LKS-PWA

LKS-SE Features

- Built-in integrated electronics, designed to automatic start and stop the pump
- Dry-running protection
- Built-in check valve
- Built-in thermal protector

LKS-PWA Features

- Unique ergonomic handle design
- Reliable sealing construction guarantee long service life
- Can be used to transfer dirty water
- Built-in thermal protector



XKS-900S



XQS

Applications

- Small electrical irrigation and drainage equipment
- Suitable to lift water from wells or ponds
- Drain water from basements, bathrooms, etc.
- For small equipment and water supply system

Features

- Copper winding
- Built-in thermal protector
- AISI 304 fabricated shaft
- Automatic start and stop with float switch
- Insulation class: B
- Protection class: IP68

MODEL	OLD MODEL		FLOW (L/min)	HEAD (m)	MAX. SUCT (m)	POWER (kw / hp)	OUTLET	PRICE (RM)
XKS-304P	-	220V	37	11	7	0.3 / 0.4	¾"	255.00
XKS-900S	-	220V	8.3 – 108.3	34 – 3.5	7	0.9 / 1.2	1"	705.00
LKS-250PWA	-	220V	133	4.5	7	250 w	1¼"	285.00
LKS-400PWA	-	220V	150	5	7	400 w	1¼"	305.00
LKS-1102SE	-	220V	8.3 – 92	45 – 5	12	1.1 / 1.5	1"	775.00
XQS 15-30/2-1.1I	XQS 6-28/2-1.1I	220V	18 – 225	30 – 1	5	1.1 / 1.5	50mm	1,005.00
XQS 14.5-42/3-1.5I	XQS 6-39/3-1.5I	220V	19 – 215	40 – 2	5	1.5 / 2.0	50mm	1,265.00
XQS 39-8/0.75I	XQS 37-4/0.75I	220V	28 – 650	7 – 2.5	5	0.75 / 1.0	75mm	855.00
SPM 37	-	220V	5.4 – 38.1	35 – 0.5	5	0.37 / 0.5	1"	385.00

LEO FOUNTAIN PUMPS



XKF-P



XKF-100S



XKF-35SA

Applications

- Supplying flow of water to fountains and devices used for aesthetic purposes
- Aeration in residential and commercial applications

Features

- Ideal for small displays, fountains and waterfall
- Engineering plastic pump body
- Choice of 5 fountain heads (cascade, water bell, foaming jet, lily, trumpet)
- 10m cable

MODEL		FLOW (L/hour)	HEAD (m)	POWER (w)	OUTLET (mm)	PRICE (RM)
XKF-15P	220V	850	1	15	13	135.00
XKF-35P	220V	1600	1.4	35	19	175.00
XKF-55P	220V	2300	2.3	55	19	215.00
XKF-110P	220V	3750	3.7	110	19	315.00
XKF-110S	220V	3750	3.7	110	19	345.00
XKF-35SA	220V	1600	1.4	35	19	205.00

LEO PIPE PUMPS



XPM-180

MODEL		FLOW (L/MIN)	HEAD (m)	MAX. SUCT (m)	POWER (kw / hp)	INLET / OUTLET	PRICE (RM)
XPM-180	220V	1 – 30	29.5 – 2	8	0.18 / 0.24	¾" X ¾"	335.00

LEO POOL & SPA PUMPS



XKP-350-2

Applications

- Transfer of clean water or other liquids similar to water in physical and chemical properties
- Water circulation with filter function in small and medium size swimming pool



XKP-1604

Features

- Built in thermal protector
- Engineering plastic pump body
- AISI 304 fabricated shaft
- Insulation class: B
- Protection class: IPX5

MODEL	OLD MODEL		FLOW (L/min)	HEAD (m)	MAX. SUCT (m)	POWER (kw / hp)	INLET/ OUTLET	PRICE (RM)
LSPA-500	-	220V	10 – 210	8 – 2	-	0.5 / 0.7	1 5/8" X 1 5/8"	385.00
XKP-301	-	220V	17 – 117	7.8 – 1	3.5	0.3 / 0.4	1 1/2" X 1 1/2"	385.00
XKP-350-2	-	220V	12.5 – 125	9 – 2	3.5	0.35 / 0.5	1 5/8" X 1 5/8"	405.00
XKP-804	XKP-800	220V	25 – 290	11 – 2	3.5	0.8 / 1.1	2" X 2"	625.00
XKP-1104	XKP-1100	220V	25 – 375	15 – 3	3.5	1.1 / 1.5	2" X 2"	675.00
XKP-1604	XKP-1600	220V	25 – 450	17.1 – 3.6	3.5	1.6 / 2.1	2" X 2"	825.00
XKP-2204	XKP-2200	220V	25 – 500	18 – 3.6	3.5	2.2 / 3.0	2" X 2"	955.00

LEO DOMESTIC LIFTING STATION



Applications

- Pumping of wastewater off places in private dwellings and basements
- Typically used for toilets, wash basins, bathtubs, cabinet showers, washing machines, etc.

Features

- Easy installation and maintenance free
- Top quality air switch and carbon filter
- Circuit board inside for time delay operation and low voltage protection

MODEL	OLD MODEL		FLOW (L/min)	HEAD (m)	POWER (kw / hp)	PRICE (RM)
WC-600A	WC-560	220V	35 - 125	8.5 – 3.5	0.6 / 0.8	1,125.00

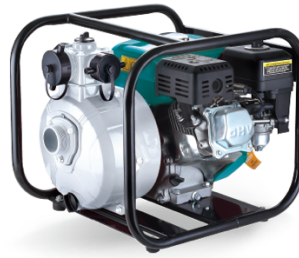
LEO GASOLINE & DIESEL ENGINE PUMPS



LGP-A



LGP-B



LGP 20-2H
*Double Impeller,
High Head



LDP-A

Applications

- Transfer of clean water or other liquids similar to water in physical and chemical properties
- Applicable in water supply and drainage for factories, mines, municipal facilities, etc.
- Fire fighting

Features

- High efficient hydraulic system
- Low fuel consumption
- Unique mechanical seal
- Anti-rust impeller and diffuser
- High quality forged steel crankshaft

MODEL	FLOW (L/min)	HEAD (m)	MAX. SUCT (m)	POWER (hp)	DISPLACEMENT (cc)	INLET / OUTLET	PRICE (RM)
LGP 10	33.3 – 100	35.7 – 6	8	1.6	42.7	1" X 1"	655.00
LGP 20-A	83.3 – 500	29.1 – 6.5	5	5.5	163	2" X 2"	935.00
LGP 30-A	83.3 – 1000	30.4 – 6	5	6.5	196	3" X 3"	995.00
LGP 20-2B	83.3 – 500	28.5 – 7.5	5	5.5	163	2" X 2"	1,715.00
LGP 30-2B	83.3 – 1000	32 – 5	5	5	-	3" X 3"	1,765.00
LGP 20-2H	83.3 – 333.3	72.5 – 5	5	6.5	196	2" X 2"	1,175.00
LGP 30-W	83.3 – 833.5	25.3 – 2.1	5	6.5	196	3" X 3"	1,495.00
LDP 20-A	83.3 – 500.1	27 – 5.9	5	3.8	219	2" X 2"	2,855.00
LDP 30-A	83.3 – 916.9	27 – 4.8	5	5.4	306	3" X 3"	2,915.00

LEO GASOLINE ENGINE GENERATORS



KB

Features

- Extra large fuel tank
- Pointer type fuel level indicator
- Smart throttle, lower fuel consumption
- Easily moved

MODEL	VOLTAGE (v)	RATED/ MAX OUTPUT (kw)	FUEL TANK (litre)	ENGINE POWER (hp)	STARTING SYSTEM	ENGINE TYPE	PRICE (RM)
KB 2500	230	2 / 2.2	13	6	RECOIL	OHV, AIR COOL, 4 STROKE	1,965.00
KB 3300	230	2.5 / 2.8	13	6	RECOIL		2,185.00
KB 6000E	230	5 / 5.5	28	13	ELECTRIC		3,875.00
KB 7000E	230	6 / 6.5	28	13	ELECTRIC		4,005.00

LEO LAWNMOWERS



LM 40-3D

Applications

- Mainly used for lawn trimming in domestic gardens and some public areas

Features

- Ergonomic handle with 3-position adjustment
- Central height adjustment
- 40 litre grass bag capacity

MODEL	CUTTING WIDTH	FUEL TANK (litre)	ENGINE POWER	STARTING SYSTEM	PRICE (RM)
LM 40-3D	40cm	1.3	4hp	RECOIL	1,585.00
LM 48M (Gas Engine)	48cm	1.3	4hp (4 Stroke)	RECOIL	1,255.00

LEO SHREDDER



LSG 2500



Collecting bag: 64L

Features

- Low noise products with cutting capacity for branches up to 40mm diameter
- Grind material with a slowly rotating sharp teeth roller
- Mechanism pulls itself down chipping the branches into rough compost

MODEL	POWER	VOLTAGE	MAX. CUT DIAMETER	PRICE (RM)
LSB 2000	2100 W	230 V	Φ35 mm	660.00
LSG 2500	2500 W		Φ40 mm	955.00
LSG 2500 (with 3m cable)				1,020.00

LEO GASOLINE HIGH PRESSURE CLEANER



MINI 2000

MODEL	MINI 2000
PERFORMANCE	
Max. Pressure	2,000 PSI
Rated Flow	6.8 L/min
ENGINE	
Model	NP150
Engine Type	OHV, Air Cooling, 4-Stroke
Displacement	149 cc
Starting System	Recoil
Engine Oil Capacity	400 ml
Recommended Engine Oil	SAE 10W-30
Fuel Tank Capacity	0.85 L
Operating Time	0.7 h
PUMP	
Pump Type	Axial Cam Pump
Adjustable Pressure	–
Thermal Relief Valve	•
EZ-Start Pump Valve	•
Chemical Injector	Soap Box
HOSE	
Hose Storage	Hook
Hose Length	7.6 m
Hose Material	PVC Braided Hose
Hose Diameter	1/4"
Hose Connection	M22
SPRAY GUN	
Spray Gun Connection	M22
Spray Gun Grade	Domestic Use
Spray Tips	QC
Turbo Nozzle	–
PACKING DETAILS	
Packing Dimension	455 x 335 x 575 mm
Net Weight	16 kg
Certification	CE Euro V
ACCESSORIES	
<ul style="list-style-type: none"> - 3 Nozzles - Hose - Spray Gun - Spark Plug Socket 	
PRICE	RM 1,515.00

LEO GASOLINE HIGH PRESSURE CLEANER



MODEL	LPW 2500
Engine Type	Air-Cooled, 4-stroke single cylinder
Engine Displacement	173 cc
Speed	2,900 rpm
Power	6.5 hp
Max. Pressure	2,500 PSI
Max. Flow	7.5 L/min
Pump Outlet Connection	M22 screw thread
Hose Diameter	6.4 mm
Hose Length	8 m
Nozzle	4 type: 0, 15, 25, 40
Wheel Size	203 mm / 8"
Gun and Lance	Trigger gun and 20" S/Steel lance
Net Weight	26.2 kg
Packing Size	540 x 487 x 520 mm
PRICE	RM 1,585.00